

## FWP

### 700 V a.c. / V d.c.(UL), 5 to 1200 A

#### Specifications

##### Description

North American style bolted tags high speed fuse links for the protection of DC common bus, DC drives, power converters/rectifiers, reduced rated voltage starters.

##### Technical data

Rated voltage: 700 V a.c. / V d.c. (UL).

Rated current: 5-1200 A.

Breaking capacity:

- 200 kA RMS Sym.
- 50 kA at 700 V d.c. (type A)
- 50 kA at 500 V d.c. (type B)

##### Standards / Agency information

CE, UL Recognition JFHR2.E91958 FWP-\_B (5-100 A, 700 -1200 A), JFHR2.E56412 FWP-\_A (125-600 A) and CSA Component Acceptance file class 1422-30, (53787) on 5-800 A



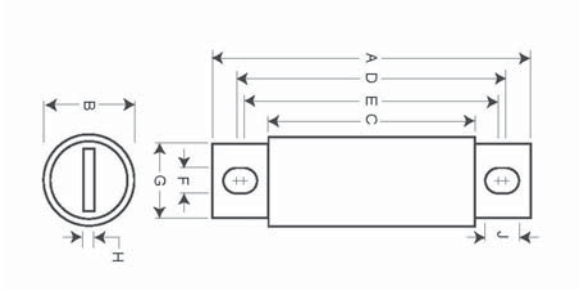
Rated voltage	Rated current (Amps)	I <sup>2</sup> t (A <sup>2</sup> Sec)		Watts loss (W)	Catalogue numbers
		Pre-arcing	Clearing at 700 V a.c.		
700 V a.c. / V d.c. (UL)	5	1.6	11	1.5	FWP-5B
	10	3.6	22	4	FWP-10B
	15	10	70	5.5	FWP-15B
	20	26	180	6	FWP-20B
	25	44	320	7	FWP-25B
	30	58	450	9	FWP-30B
	35	34	160	12	FWP-35B
	40	76	320	12	FWP-40B
	50	135	600	12	FWP-50B
	60	210	950	15.5	FWP-60B
	70	305	2000	18	FWP-70B
	80	360	2400	21	FWP-80B
	90	415	2700	25	FWP-90B
	100	540	3500	27	FWP-100B
	125	1800	7300	28	FWP-125A
	150	2900	11,700	32	FWP-150A
	175	4200	16,700	35	FWP-175A
	200	5500	22,000	43	FWP-200A
	225	7700	31,300	45	FWP-225A
	250	10,500	42,500	48	FWP-250A
	300	17,600	71,200	58	FWP-300A
	350	23,700	95,600	65	FWP-350A
	400	31,000	125,000	78	FWP-400A
	450	36,400	137,000	94	FWP-450A
	500	45,200	170,000	107	FWP-500A
	600	66,700	250,000	122	FWP-600A
	700	54,000	300,000	125	FWP-700A
800	78,000	450,000	140	FWP-800A	
900	91,500	530,000	150	FWP-900A	
1000	120,000	600,000	170	FWP-1000A	
1200	195,000	1,100,000	190	FWP-1200A	

Data sheets: 720012, 5785316 (5-30 A), 361 (125-600 A), 5785308 (35-100 A, 700-1200 A)

# FWP

700 V a.c. / V d.c.(UL), 5 to 1200 A

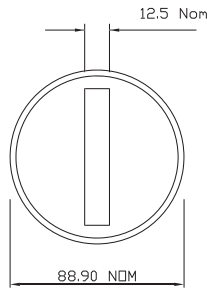
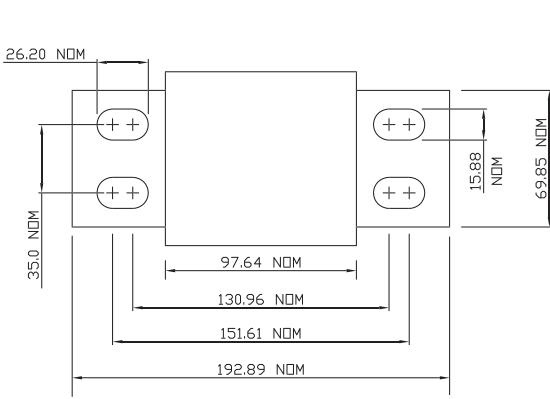
## Dimensions



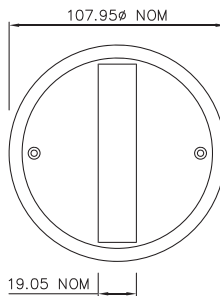
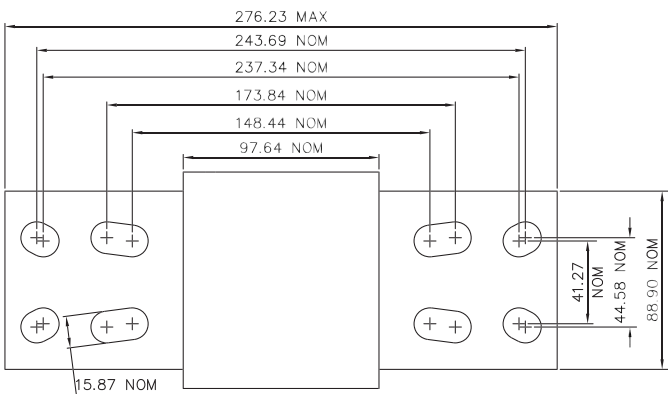
5-800 A - in

Amp range	A	B	C	D	E	F	G	H	J
5-30	2.87	0.56	1.86	2.48	2.48	0.25	0.41	0.06	0.25
35-60	4.38	0.81	2.75	3.71	3.31	0.34	0.73	0.13	0.54
70-100	4.41	0.95	2.59	3.63	3.56	0.34	0.75	0.13	0.38
125-200	5.09	1.5	2.84	4.19	3.5	0.41	1	0.25	0.75
225-400	5.09	2	2.84	4.28	3.53	0.41	1.5	0.25	0.78
450-600	7.09	2.5	2.84	5.72	4.19	0.53	2	0.38	1.3
700-800	6.63	2	2.76	5.56	5.06	0.63	1.5	0.25	0.88
900-1000	Refer to drawing								
1200	Refer to drawing								

1" = 25.4mm



900-1000 A - mm



1200 A - mm

Data sheets: 720012, 5785316 (5-30 A), 361 (125-600 A), 5785308 (35-100 A, 700-1200 A)